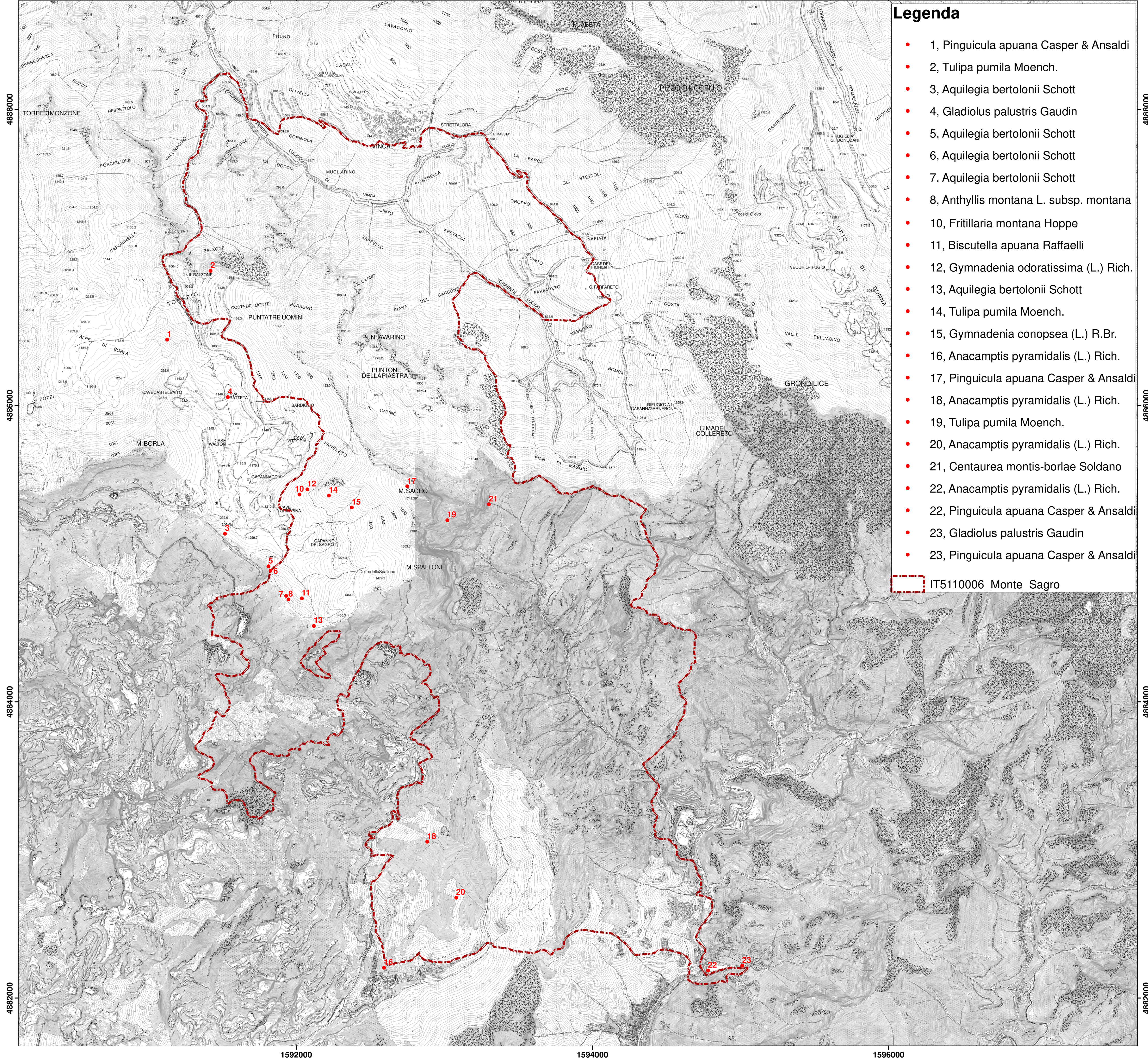
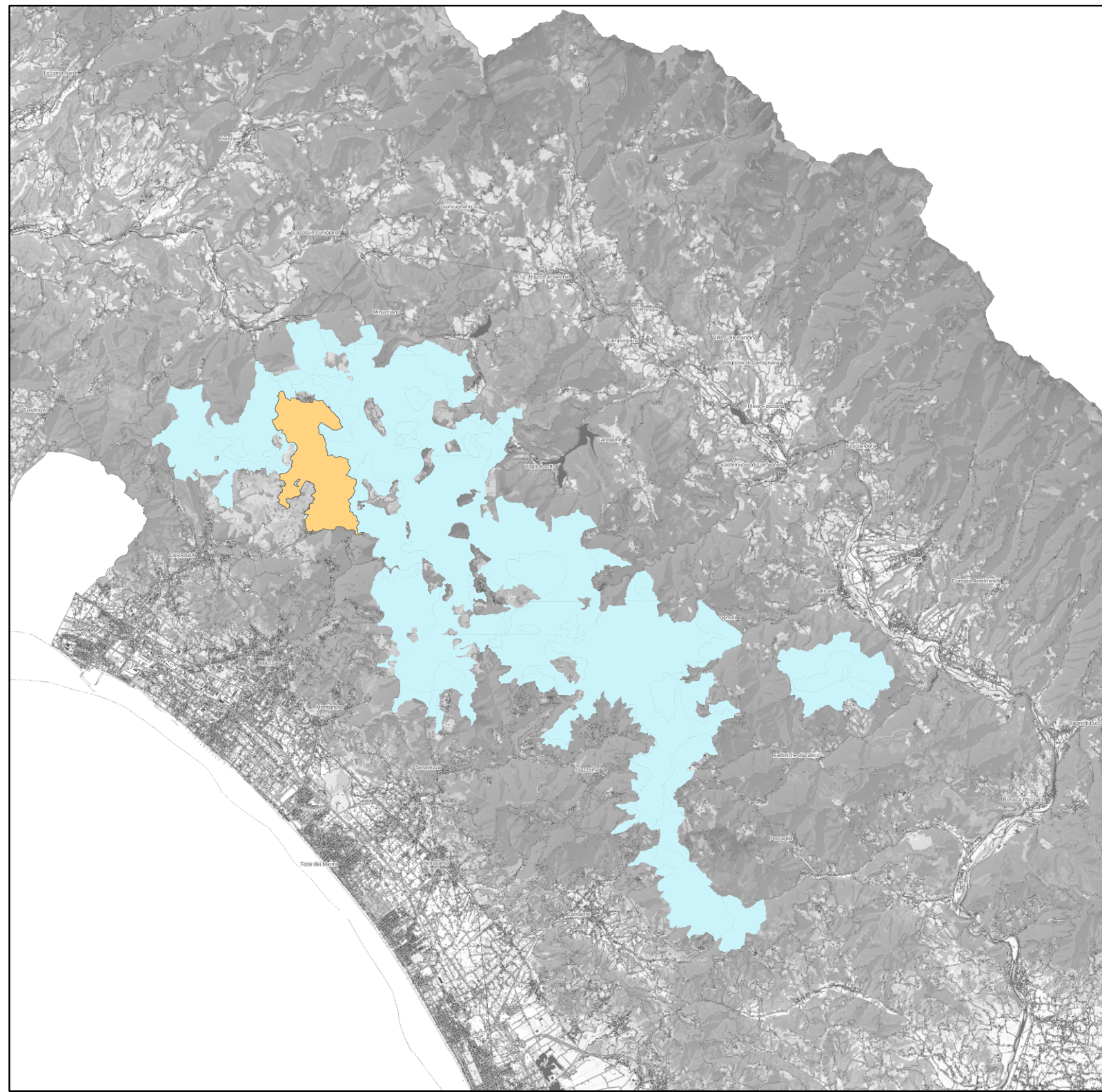


CARTA DELLE EMERGENZE FLORISTICHE Scala 1:13.000



Legenda

- 1, *Pinguicula apuana* Casper & Ansaldo
- 2, *Tulipa pumila* Moench.
- 3, *Aquilegia bertolonii* Schott
- 4, *Gladiolus palustris* Gaudin
- 5, *Aquilegia bertolonii* Schott
- 6, *Aquilegia bertolonii* Schott
- 7, *Aquilegia bertolonii* Schott
- 8, *Anthyllis montana* L. subsp. *montana*
- 10, *Fritillaria montana* Hoppe
- 11, *Biscutella apuana* Raffaelli
- 12, *Gymnadenia odoratissima* (L.) Rich.
- 13, *Aquilegia bertolonii* Schott
- 14, *Tulipa pumila* Moench.
- 15, *Gymnadenia conopsea* (L.) R.Br.
- 16, *Anacamptis pyramidalis* (L.) Rich.
- 17, *Pinguicula apuana* Casper & Ansaldo
- 18, *Anacamptis pyramidalis* (L.) Rich.
- 19, *Tulipa pumila* Moench.
- 20, *Anacamptis pyramidalis* (L.) Rich.
- 21, *Centaurea montis-borlae* Soldano
- 22, *Anacamptis pyramidalis* (L.) Rich.
- 22, *Pinguicula apuana* Casper & Ansaldo
- 23, *Gladiolus palustris* Gaudin
- 23, *Pinguicula apuana* Casper & Ansaldo

IT5110006 Monte Sagro



Piano di Gestione della Zona Speciale di Conservazione "Monte Sagro" (IT5110006)

Carta delle emergenze floristiche

Agosto 2021



Mandataria

Mandante