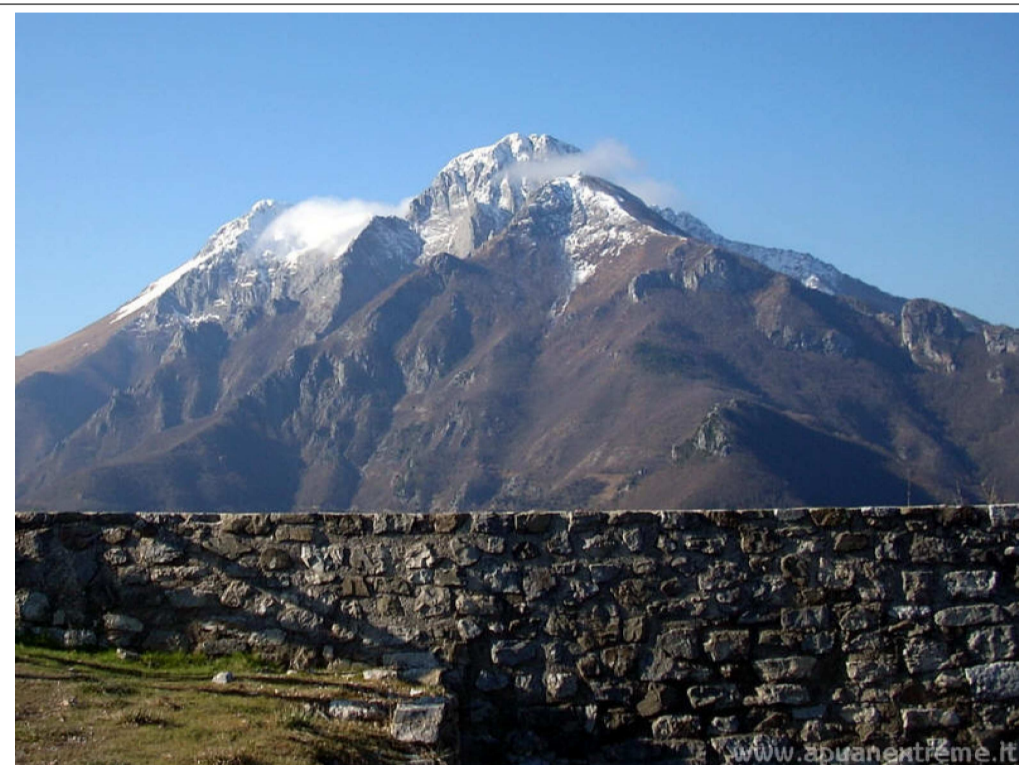


Parco Regionale delle Alpi Apuane



Piano di Gestione della Zona Speciale di Conservazione
"Monte Corchia - Le Panie"
(IT5120014)

Carta delle emergenze floristiche

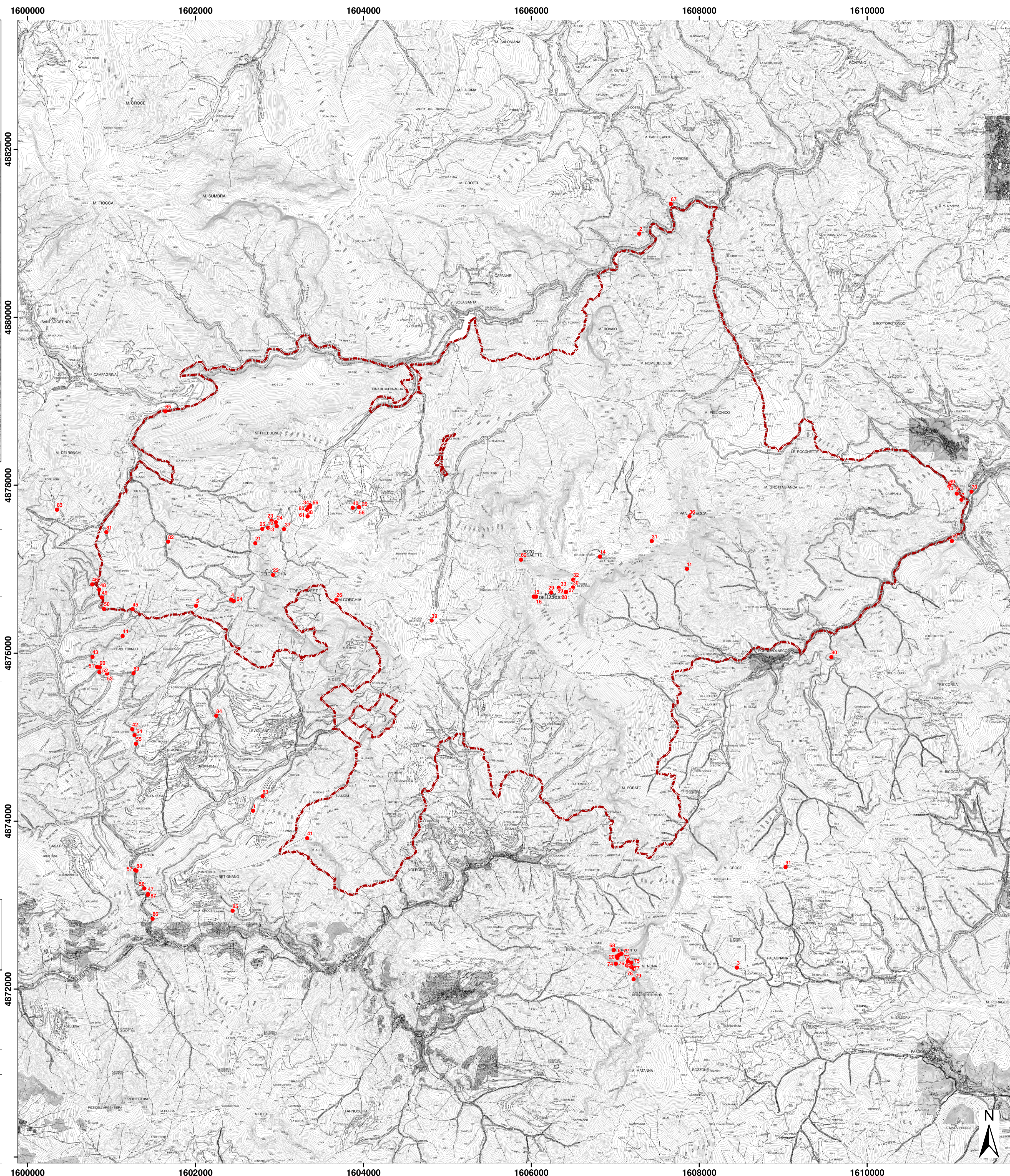
Agosto 2021



Mandataria



Mandante



- Legenda**
- 1, *Anacamptis pyramidalis* (L.)
 - 2, *Anacamptis pyramidalis* (L.)
 - 3, *Anacamptis pyramidalis* (L.)
 - 4, *Anacamptis pyramidalis* (L.)
 - 5, *Anacamptis pyramidalis* (L.)
 - 6, *Anacamptis pyramidalis* (L.)
 - 7, *Aquilegia apuana*
 - 9, *Aquilegia apuana*
 - 10, *Aquilegia apuana*
 - 11, *Aquilegia bertolonii* Schott
 - 12, *Aquilegia bertolonii* Schott
 - 13, *Aquilegia bertolonii* Schott
 - 14, *Geranium argenteum* L.
 - 14, *Aquilegia bertolonii* Schott
 - 15, *Dryas octopetala* L.
 - 15, *Aquilegia bertolonii* Schott
 - 15, *Athamanta coriaria* Ferrarini
 - 16, *Pinguicula apuana* C & A
 - 16, *Aquilegia bertolonii* Schott
 - 17, *Aquilegia bertolonii* Schott
 - 18, *Aquilegia bertolonii* Schott
 - 19, *Aquilegia bertolonii* Schott
 - 20, *Aquilegia bertolonii* Schott
 - 21, *Aquilegia bertolonii* Schott
 - 22, *Aquilegia bertolonii* Schott
 - 23, *Aquilegia bertolonii* Schott
 - 24, *Aquilegia bertolonii* Schott
 - 25, *Aquilegia bertolonii* Schott
 - 26, *Aquilegia bertolonii* Schott
 - 26, *Dryas octopetala* L.
 - 26, *Pinguicula apuana* C & A
 - 27, *Aquilegia bertolonii* Schott
 - 28, *Atadnus glaucophyllus*
 - 29, *Athamanta coriaria* Ferrarini
 - 30, *Athamanta coriaria* Ferrarini
 - 31, *Athamanta coriaria* Ferrarini
 - 32, *Athamanta coriaria* Ferrarini
 - 33, *Athamanta coriaria* Ferrarini
 - 34, *Dactylorhiza incarnata* (L.)
 - 35, *Dactylorhiza maculata*
 - 36, *Dryas octopetala* L.
 - 37, *Epipactis palustris* (L.) Crantz
 - 38, *Eriophorum latifolium* Hoppe
 - 39, *Eriophorum latifolium* Hoppe
 - 40, *Eriophorum latifolium* Hoppe
 - 41, *Gladiolus palustris* Gaud.
 - 42, *Gladiolus palustris* Gaud.
 - 43, *Gladiolus palustris* Gaud.
 - 44, *Gladiolus palustris* Gaud.
 - 45, *Gladiolus palustris* Gaud.
 - 46, *Gladiolus palustris* Gaud.
 - 47, *Gladiolus palustris* Gaud.
 - 48, *Gladiolus palustris* Gaud.
 - 49, *Gladiolus palustris* Gaud.
 - 50, *Gladiolus palustris* Gaud.
 - 51, *Gladiolus palustris* Gaud.
 - 52, *Gladiolus palustris* Gaud.
 - 53, *Gladiolus palustris* Gaud.
 - 54, *Gladiolus palustris* Gaud.
 - 55, *Gladiolus palustris* Gaud.
 - 56, *Gladiolus palustris* Gaud.
 - 57, *Gladiolus palustris* Gaud.
 - 58, *Gymnadenia conopsea*
 - 59, *Gymnadenia odoratissima*
 - 60, *Herminium monorchis* (L.)
 - 61, *Herminium monorchis* (L.)
 - 62, *Linaria alpina* (L.)
 - 63, *Orchis anthropophora* (L.) All.
 - 64, *Pinguicula apuana* C & A
 - 65, *Pinguicula apuana* C & A
 - 66, *Pinguicula apuana* C & A
 - 67, *Pinguicula mariae* Casper
 - 68, *Pinguicula mariae* Casper
 - 69, *Pinguicula mariae* Casper
 - 70, *Pinguicula mariae* Casper
 - 71, *Pinguicula mariae* Casper
 - 72, *Pinguicula mariae* Casper
 - 73, *Pinguicula mariae* Casper
 - 74, *Pinguicula mariae* Casper
 - 75, *Pinguicula mariae* Casper
 - 76, *Pinguicula mariae* Casper
 - 77, *Pinguicula mariae* Casper
 - 78, *Pinguicula mariae* Casper
 - 79, *Pinguicula mariae* Casper
 - 80, *Rhododendron ferrugineum* L.
 - 81, *Sphagnum subnitens*
 - 82, *Sphagnum subnitens*
 - 83, *Sphagnum subsecundum*
 - 84, *Spiranthes aestivalis* (Poir.)
 - 85, *Spiranthes aestivalis* (Poir.)
 - 86, *Spiranthes aestivalis* (Poir.)
 - 87, *Spiranthes aestivalis* (Poir.)
 - 88, *Spiranthes aestivalis* (Poir.)
 - 89, *Spiranthes aestivalis* (Poir.)
 - 90, *Spiranthes aestivalis* (Poir.)
 - 91, *Tulipa pumila* Moench
- Zona Speciale di Conservazione
--- "Monte Corchia - Le Panie" (IT5120014)

Scala 1:25.000